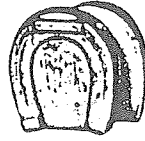


94



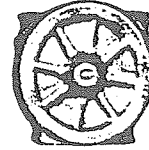
94HL



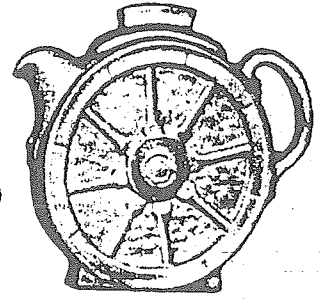
94H



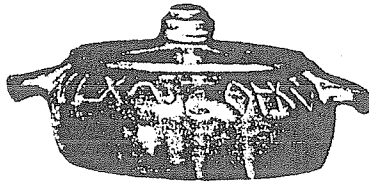
94A



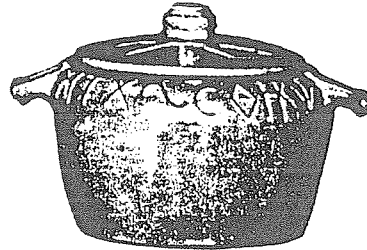
94B



94T



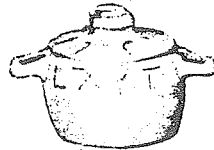
94V



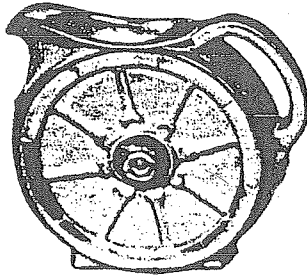
94W



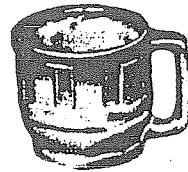
94P



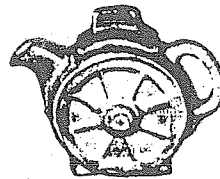
94U



94D



94M

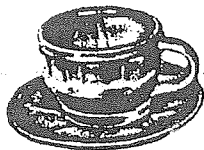


94J

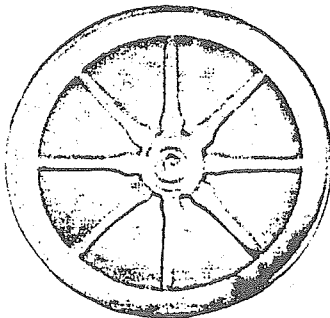


94Q

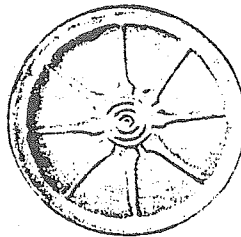
94C



94E



94F



94G



94X



94N

94—9" vase	1.50
94a—10 oz. cream pitcher50
94b—10 oz. sugar bowl50
94c—5 oz. cup40
94d—2 qt. pitcher	1.80
94e—5" saucer40
94f—9" plate80
94g—7" plate60
94h—salt and pepper, pair60
94hl—horse shoe set, pair	1.00

94j—2 cup tea pot80
94m—12 oz. mug80
94n—1 qt. service dish	1.00
94p—16" platter	5.00
94q—13" platter	2.00
94r—6 cup tea pot	1.80
94u—12 oz. individual baker	1.00
94v—1 1/2 qt. baker	1.80
94w—2 1/2 qt. baker	2.50
94x—16 oz. chili or soup60